

WINDOW RESTRICTOR

Tools needed:

- Screwdriver
- Pencil
- Drill with 2.0mm drill bit

Product components:

- Restrictor
- Large plastic cover
- 4 x 4.3 x 45 gimlet pointed screws
- 1 x key

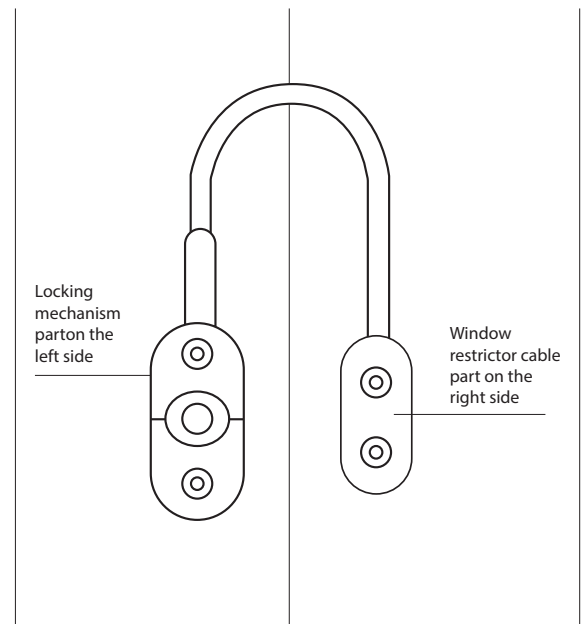
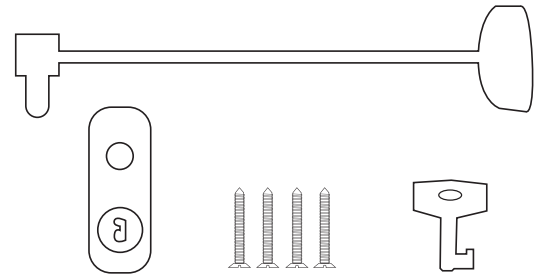
To comply with the EN 13126-5:2011 + A1:2014 test standard, the restrictor(s) must be fitted so that the total opening of the whole length of the window opening is less than 89mm when using as a child safety product, and 100mm for other requirements.

The window restrictor is designed to take a minimum of a 35kg load when it is pushed open. The window may need to have multiple restrictors fitted to achieve this requirement. There is no minimum or maximum dimension for which window can be used as long as the window opening is restricted to 89mm or 100mm.

Fitting Instructions:

- 1) You will first need to decide where on your window you want to put the restrictor. We suggest that you fit the window restrictor in the middle of the longest side opposite the hinges.
- 2) Take the locking system (C) and remove the plastic cap. To remove the cap, hold both sides of the plastic cap, and press down on where the key goes in (C1). This will make the locking system pop out.
- 3) Place the locking system on the window frame (1A) (it does not matter if the key hole is at the top or bottom). Mark the 2 screw holes on the window frame using a pencil.
- 4) Using a drill or screwdriver, screw two self-drilling screws (A) into the locking system to secure it to the window.
- 5) Take the steel cable (B) and place the knuckle end (shaped like a T) into the locking system already fixed to the window. Place the other end on the fixed window panel (2B) (making sure that the cable is not tight and has length for the window to open around 10cm – see diagrams 1 and 2), and pull the plastic cap away from the end of the cable (a bit of plastic preventing the cap from locking will fall out, throw this in the bin).
- 6) Mark the 2 screw holes on the end of the cable using a pencil.
- 7) Using a drill or screwdriver, screw two self-drilling screws (A) into the end of the cable to secure it to the panel.
- 8) Once both parts are secure to the window, check to make sure the cable fits into the locking system. Take the key (D), place it into the locking system and make sure it locks and releases the cable.
- 9) Lock the cable into the locking system and open the window.
- 10) This should allow the window to open either under 89mm or 100mm.
- 11) If everything works correctly, remove the cable from the locking system and attach the plastic cap by pressing it securely onto the locking system. On the end of the cable, attach the plastic cap.

We recommend that you keep the key(s) away from the locking mechanism and away from small children.



1	2	3	4	5	6	7	8	9
category of use	durability	mass	fire resistance	safety in use	corrosion resistance	security	applicable part	test size
-	5	015	0	3/2	3	-	5/6	A

Maintaining your Restrictor

We recommend that you use a moist cloth to clean the surface and not abrasive materials or solvents.

The lock will benefit from periodic lubrication with a light oil.