

Indicator Bolt

We know washrooms

Installation Instructions

Cleaning & Maintenance

Cleaning ABS Components:

All ABS fittings and hardware should be cleaned with a warm damp cloth and finished with a soft dry cloth.

Do not use abrasive cleaners; polish and/or cleaning solvents/solutions containing any of the following chemicals - Chlorinated Hydrocarbons; Esters; Ketones. They will cause irreparable damage to the surface of the product.

Cleaning Powder Coated Components:

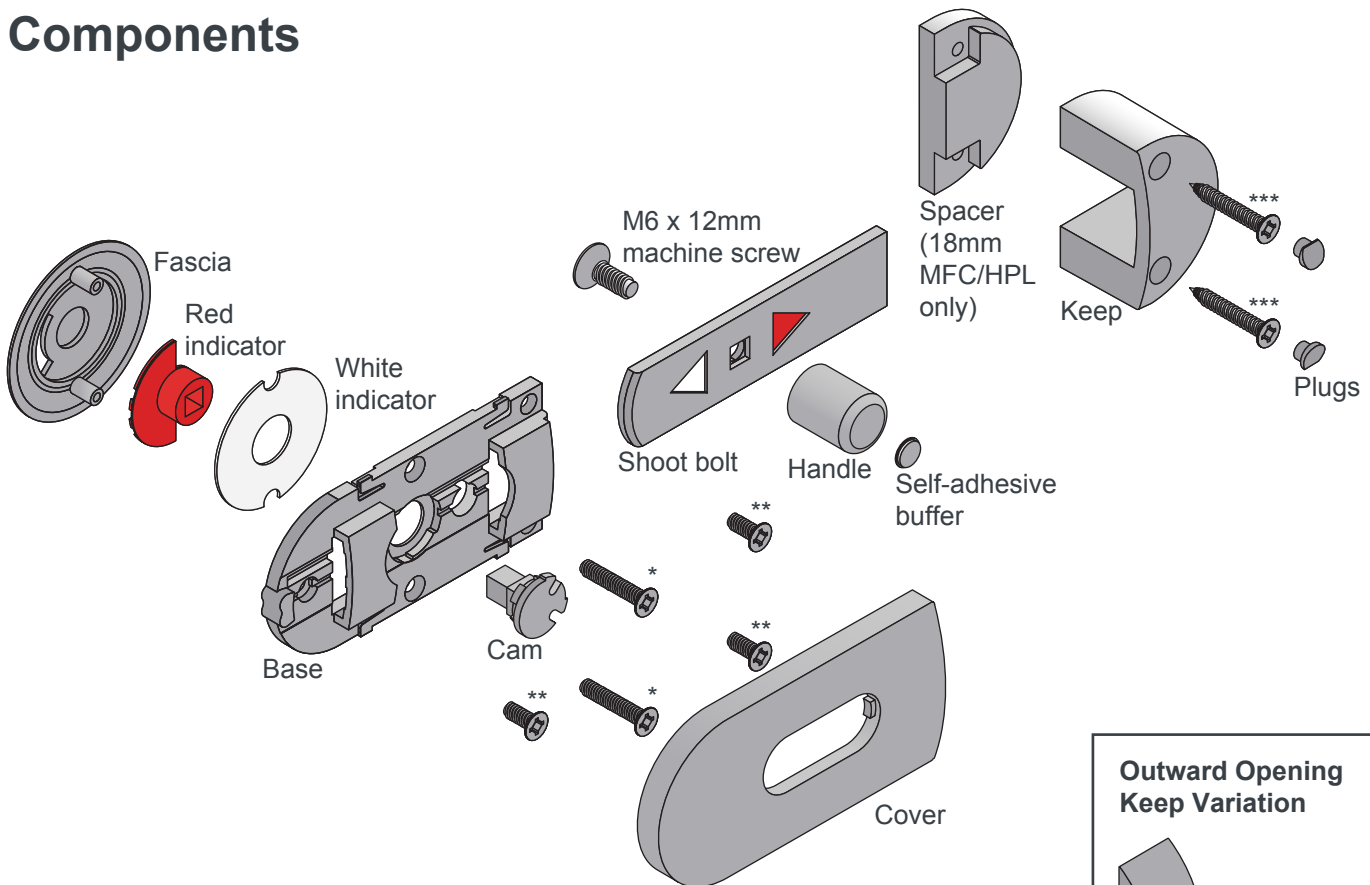
Use a solution of warm water and mild detergent. All surfaces should be cleaned using a soft cloth or sponge, using nothing harsher than natural bristle brushes.

Water and a small amount of mild detergent may be used to clean the surface of the powder coating but, if the atmospheric pollution has resulted in heavy soiling of the coating, a small amount of white spirit may be used followed by cleaning with water and mild detergent.

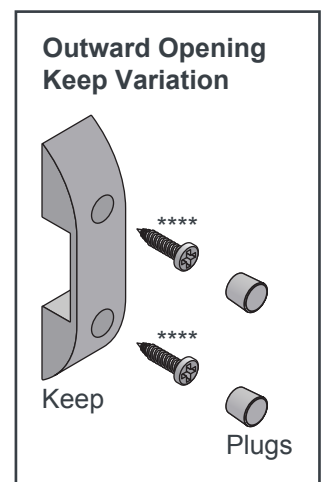
Do not under any circumstances, use abrasive cleaners; polish and/or cleaning solvents/solutions containing any of the following chemicals - Chlorinated Hydrocarbons; Esters; Ketones. They will cause irreparable damage to the surface of the product.

It is recommended that in wet areas such as swimming pools, shower cubicles etc., powder coated components should be cleaned a minimum of once a week.

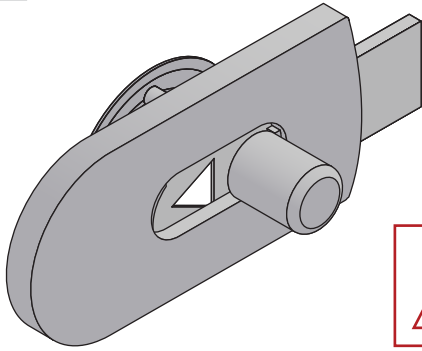
Components



	Material	Screw
*	13mm SGL	M4 x 16mm machine screws
	18mm MFC/HPL	M4 x 20mm machine screws
**	All Materials	Plasfix 45' 4.0 x 12mm screws
***	13mm SGL	Plasfix 45' 4.0 x 12mm screws
	18mm MFC/HPL	No.6 x 1" countersunk screws
****	All Materials	No.8 x 5/8" pan head screws



1 Indicator Bolt Fixing Details



**Do NOT use
powertools or
overtighten screws**

1

Before continuing:
Cam must rotate freely 180° and be placed in position shown

2

3

Fix TIGHTLY

5

2mm \varnothing 8mm deep
18mm MFC/HPL
3.5mm \varnothing 11.5mm deep
13mm SGL
Plasfix 45°

4 BEFORE FIXING:

- Ensure indicator bolt is pressed against white indicator
- Ensure indicator bolt is in closed position

Do NOT overtighten

18mm M4 MFC/HPL 20mm
13mm M4 SGL 16mm

outside view

6 BEFORE FITTING:

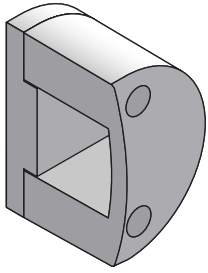
- Indicator bolt must be in UNLOCKED position
- Ensure free movement of bolt

7

'Click'

Ensure cover is fully pushed & sits flat

2 Keep Fixing Details



1

Inward opening doors:

Spacer:
18mm MFC/HPL pilasters only.
For 13mm SGL, use spacer as a template for drilling.

- 3 18mm MFC/HPL (2mm \emptyset , 3mm deep)
- 13mm SGL (3.5mm \emptyset , 11mm deep)
- 4 18mm MFC/HPL (No.6, 1")
- 13mm SGL (Plasfix 45)

1

Outward opening doors:

outside view

- 1 18mm MFC/HPL (2mm \emptyset , 3mm deep)
- 2 No.8 (5/8")
- 3 13mm SGL (3.5mm \emptyset , 11mm deep)

e: tech@venesta.co.uk | F: 01782 657 386 | T: 01782 277 200 | Technical Help

3 Appendix: Emergency Release

- 1 Slide indicator bolt free from keep:**

 - insert pen/ pencil into recess in fascia
 - rotate red indicator as shown.
- 2**

 - Aluminium keeps will come away from the pilaster when forced.
 - ABS keeps are sacrificial and are designed to break in similar circumstances.