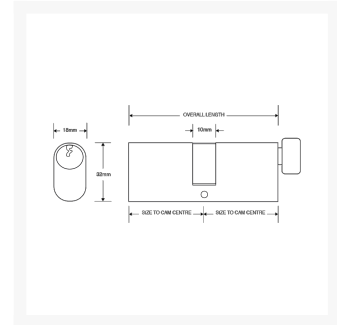




# ASEC 6-Pin Oval Key & Turn Cylinder



## Description

The Asec 6 pin oval key & turn cylinder is a good entry level cylinder, it is supplied complete with 3 keys and a retaining screw and is available in a choice of sizes and finishes.



Supplied With 3  
Keys



6 Pin Mechanism



Keyed To Differ

## Features

---

- Cylinder Retaining Screw Included

- Supplied with 3 Keys

- This cylinder can be keyed alike or master keyed through our workshop

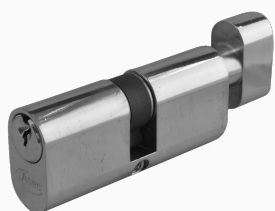
## Product Table

---



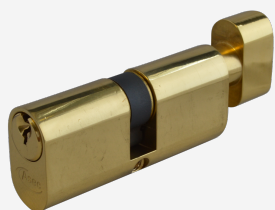
### **AS1426**

70mm 35/T35 (30/10/T30) KD NP



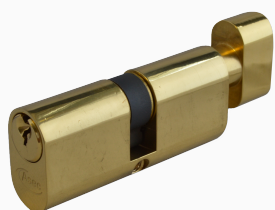
### **AS10793**

70mm 35/T35 (30/10/T30) KD NP Visi



### **AS1427**

70mm 35/T35 (30/10/T30) KD PB



### **AS10794**

70mm 35/T35 (30/10/T30) KD PB Visi

