



Tubular Latch

Product Images

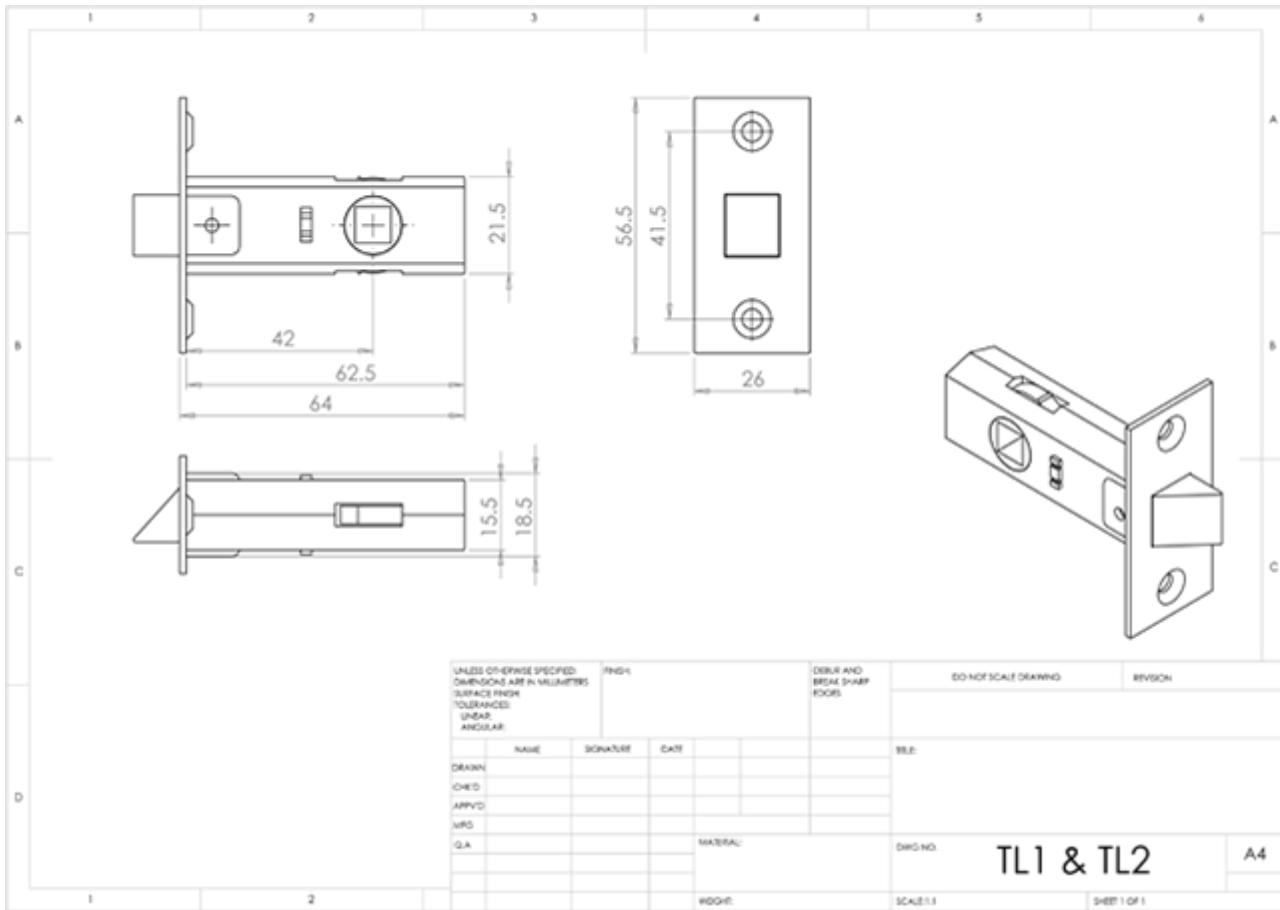




Description

Tubular latch for use with sprung furniture. Complete with strike plate and fixings in 64mm or 76mm options. Not suitable for use with unsprung furniture. Comes with a 10 year mechanical guarantee. Suitable for domestic and commercial use.

Technical Details



Specification



Additional Information

Short Description	Tubular Latch
SKU	Tubular Latch Range
Brands	Eurospec
Technical	4,49
Line Drawings	TL1.PDF, TL2.PDF, TL3.PDF, TL4.PDF

Product Options

Finishes:	Electro Brassed
	Florentine Bronze
	Nickel Plate
	Powder Coat Black
Options:	Standard
	Blister Pack
Sizes:	64mm
	76mm

